



Investing

**for Positive Impact
across the
Midwest**

SUPPORTERS



AUTHOR



PRODUCER





Investing for Impact Across All States

There is abundant activity across all 12 Midwestern states. They may not call it “impact investing” but there are hundreds of funds based in the Midwest with an explicit focus on generating a positive, measurable social and/or environmental impact alongside a financial return.

So far we’ve identified 416 funds that meet our two gating criteria: maintain an office location in the Midwest and perform some type of impact measurement. Impact measurement could be indicated by impact reporting available on their website or for investors, impact reporting required by government agencies, or membership in organizations that require impact measurement. By funds, we mean financial intermediaries with pools of capital that others can invest in and are defined to meet certain impact and financial returns. This includes traditional closed-end funds like venture capital and private credit firms, as well as open pools such as Community Development Financial Institutions (CDFIs), and many more examples.



Majority of the Funds Focus on Place

Among the 5 P's associated with Impact Engine's Framework for Understanding Impact (People, Place, Product, Process and Paradigm), the top three impact themes across the Midwest are Place, People and Product. Many funds invest across multiple themes. Investing to positively impact a certain geographical place, and the people living in that place is by far the most common type of impact investing in this region.

PLACE

159

funds (12 states)

Companies that base their operations where jobs are scarce or offer little upward mobility



PEOPLE

80

funds (9 states)

Companies that are founded by and/or create opportunity for people historically underserved by existing markets

PRODUCT

43

funds (7 states)

Companies that offer products and services that directly create a positive impact

Further Reading: [Impact Engine's "5P Framework for Understanding the Impact in Impact Investing"](#)



What **Place** Means

Every fund identified in this report is at least *partially* based in the Midwest, as that is a gating factor for inclusion in this report. Most, but not all of the funds, also invest in the Midwest or a subset of the Midwest as their impact focus. This may mean a large area such as a region (i.e. Upper Midwest) or state, or as small an area as a city, neighborhood, or a single street.



As Clara Miller, President Emerita of the Heron Foundation shared:

“Build on the love people have for where they live”

Further Reading: [*“Urban Institute Place-based Impact Investing \(PBII\) Tool Kit”*](#)



Diversity of Investment Approaches

Funds approach making an impact across a diverse set of investment asset classes. Clearly and not surprisingly, this is dominated by private market approaches.

180 funds reported asset class:



54

Real Estate



55

**Private Equity
(including Venture
Capital)**



55

Debt



4

Public Equity



12

**Multiple Asset
Classes**



Noteworthy: CDFIs, Credit Unions and Community Banks

Local financial institutions such as Community Development Finance Institutions (CDFIs), Credit Unions, and Community Banks play an important role in the Midwest.

More than half of the funds we found are federally designated and supported CDFIs. These institutions began informally in the 1880s by providing financial services to communities that historically could not access capital and have grown into a unique industry that offers more flexible underwriting criteria than traditional financial institutions and is more easily accessible for local business owners and others seeking first-time capital. Major policies like the Inflation Reduction Act are pumping millions of dollars into these community-level investors, hopefully leading to more investment from private investors to stretch those dollars even further.

Credit unions are depository institutions that tend to serve particular groups of people, such as religious communities, ethnic groups, employees, or specific geographies. At least two credit unions in the data set have over \$1 billion in assets. “Community bank” is an informal designation to describe smaller banks that are generally state-chartered. Community banks don’t typically have stated demographic or geographic requirements, but many focus on certain communities or investment interests in their geographic footprint. Both credit unions and community banks allow for community members to leverage their regular banking to infuse cash into communities they care about.

There are 242 CDFIs across all 12 states in the region. The top Midwestern states are shown below.



Michigan: 43
Minnesota: 34
Ohio: 34
Illinois: 31

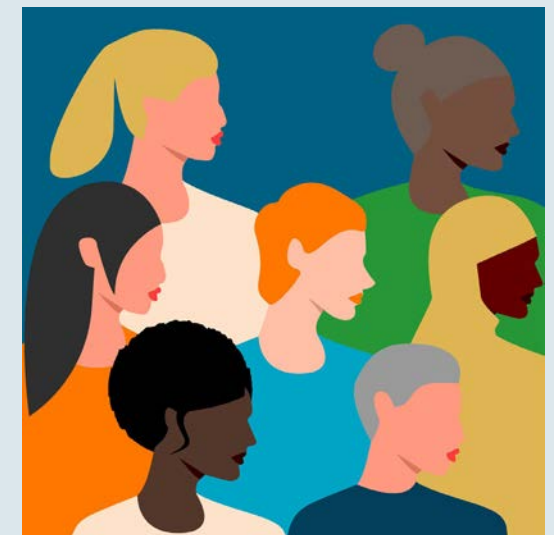




Noteworthy: Venture Capital

Despite the true headlines of Venture Capital investment being concentrated on the coasts, Venture Capital is also a popular asset class making an impact across the Midwest. We found 41 VC funds with an impact focus across five states. Not surprisingly **given scale and return expectations, they are primarily concentrated in states with major cities: Illinois (21), Minnesota (13), Ohio (4), Michigan (2), and North Dakota (1).**

We found that while some Midwestern Venture Capital funds start with a national or international focus, most (at least initially) concentrate on local investments. It is not uncommon for hyper-local venture funds to start with a focus on specific cities, then over time expand to include a broader state or region to reach sufficient deal flow. In all cases, these place-based Venture funds are seeking to create impact through economic development or **empowering overlooked BIPOC or women founders.**





Noteworthy: Foundations

Like their counterparts across the country, more Midwestern foundations are becoming active impact investors. Foundations came up regularly in our searches and conversations about the landscape, both as asset allocators investing in these funds but also as leaders creating funds and other vehicles for all investors, including family offices and private companies.

While private foundations are leading the way, community foundations are emerging as important players, engaging their donors in impact investing locally, creating new partnerships with local corporations, and in some cases even creating the funds that community members can invest in directly.



FOUNDATION ECOSYSTEM



90%
focus on their own
state (some are
designated CDFIs)





Noteworthy: Stepping Up To Meet Civic and Environmental Challenges



Source: GroundBreak Coalition

Midwestern communities have a proven philanthropic track record of mobilizing resources and fostering collaboration in response to environmental crises and civic challenges. This resilience and collective action create a strong foundation to add on impact investments that can drive sustainable recovery and inclusive growth across the region. In our scan, we found several local examples of impact investing funds being created in response to very specific local challenges. For example, responding to the civil unrest after George Floyd's murder, the McKnight Foundation in Minneapolis is leading a cross-sector community effort to create the \$5.3 billion GroundBreak Coalition. And after the Derecho hit their communities in 2021, several Midwestern towns rallied to create project-based funds to jumpstart rebuilding.



State Synopsis Showcase

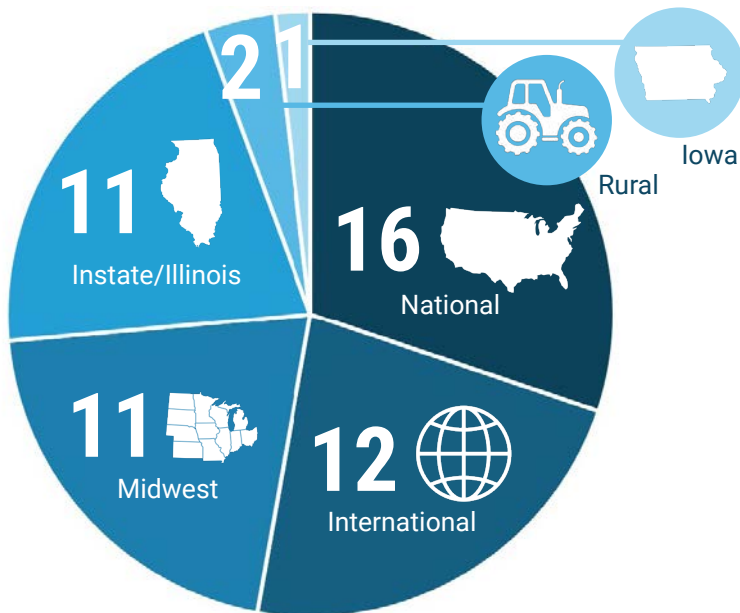


This section offers a focused showcase of impact investing funds in four Midwestern states— Illinois, Ohio, Minnesota, and South Dakota— selected based on the availability and reliability of data. The following pages highlight key facts about the funds within these states.

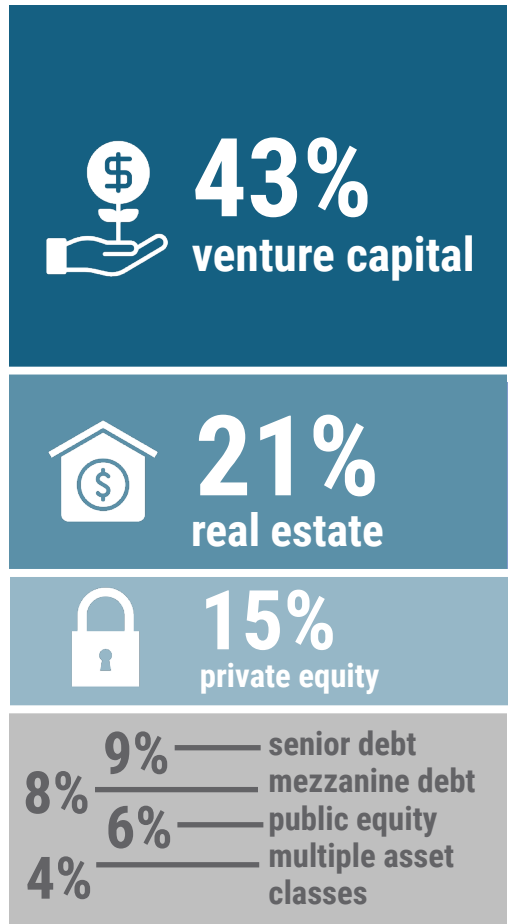
ILLINOIS



GEOGRAPHIC FOCUS (Sample size: 46)



ASSET CLASS (Sample size: 53)



88
funds

CDFIs



5 Banks
13 Credit Unions

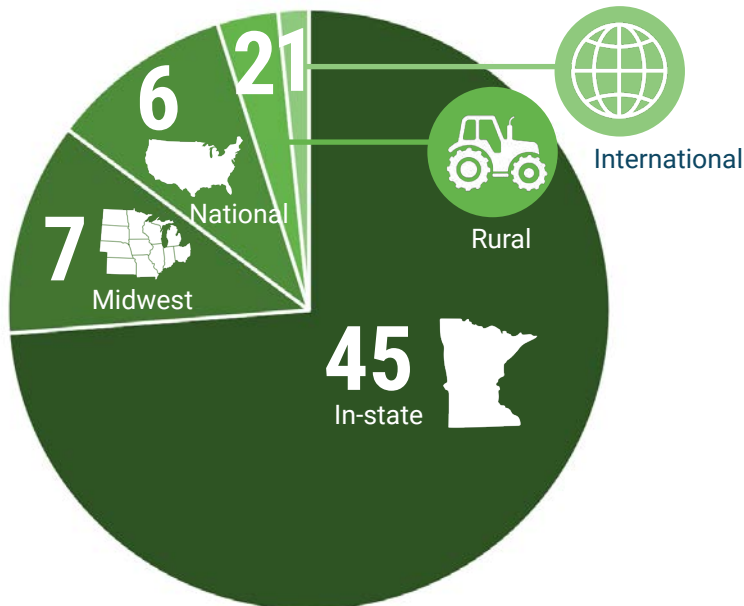
Further Reading: ["Chicago Impact Investing Landscape"](#)

MINNESOTA

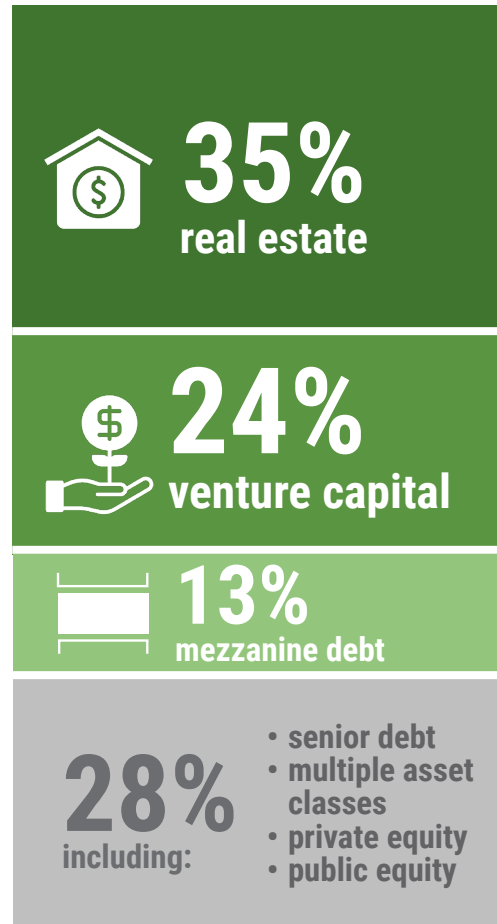


GEOGRAPHIC FOCUS

(Sample size: 61)

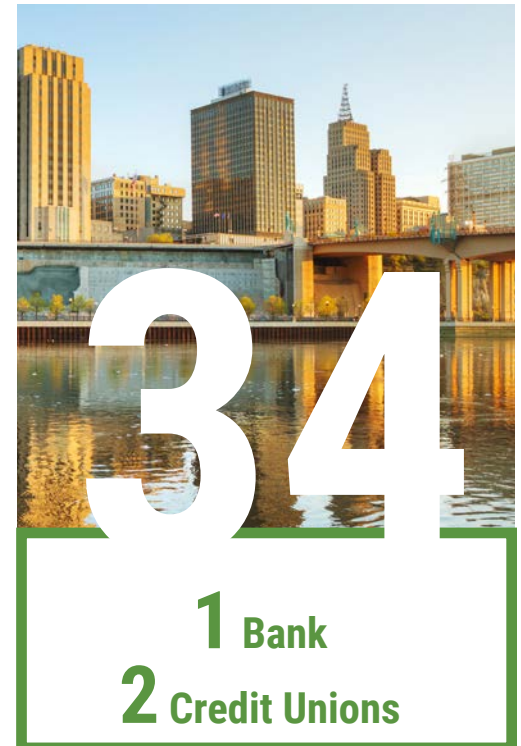


ASSET CLASS (Sample size: 54)



90
funds

CDFIs



Further Reading: ["Impact Hub MSP Twin Cities Impact Investing Map"](#)



OHIO



▲
56
funds

ASSET CLASS (Sample size: 53)



46%
real estate



17%
senior debt



17%
venture capital

20%
including:

- mezzanine debt
- private equity
- multiple asset classes

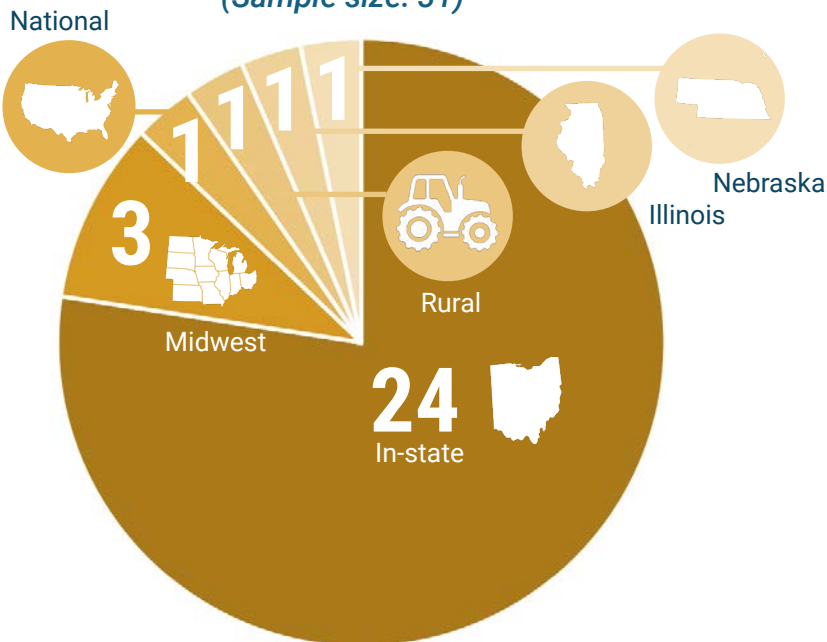
CDFIs



17 Credit Unions

GEOGRAPHIC FOCUS

(Sample size: 31)



SOUTH DAKOTA



17
funds

CDFIs



ASSET CLASS *(Sample size: 11)*



55%
senior debt



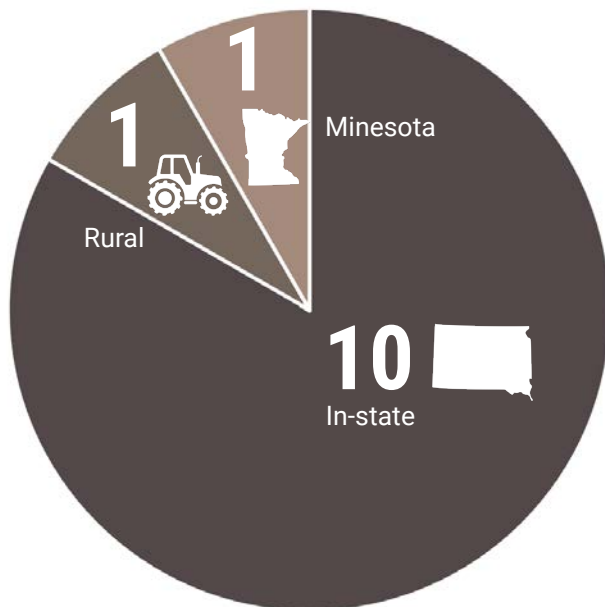
27%
mezzanine debt




18%
real estate

GEOGRAPHIC FOCUS

(Sample size: 12)



Summary and Next Steps

A vertical decorative bar on the left side of the slide, consisting of a series of colored circles in shades of green, yellow, blue, and brown, arranged in a repeating pattern.

When we started this project in March 2024, we weren't sure what we would find as we sought out funds investing for a positive impact across the Midwest. We are thrilled and inspired to see the breadth and depth of strategies and those investing in them.

As a group, we, the supporters, authors, and producers of this report, are looking forward to working together with the many other impact investing field builders across the region to catalyze even more movement of capital into impact. **We welcome others to build on this work** through taking an idea you see here and applying it to your own place, extending the depth of this research, moving your capital into Midwestern fund strategies, or any number of other possible paths to more investing with impact.





APPENDICES

a. Methodology

b. Fund Lists



a. Methodology

This report focuses on creating an initial snapshot of the impact investment landscape in the Midwest. We combined **quantitative data analysis with qualitative interviews**, supplementing desk research with rich, context-specific insights.

We integrated in-house datasets from Cogent Consulting, PBC and Impact Engine, PBC with input from our project supporters and publicly available data to create a picture of the region's impact investment ecosystem. Where explicit public data was unavailable, the firms applied their combined industry expertise to make informed judgments. To ensure data reliability, we required 40% of key data points to be present for firms to be included in the analysis. We set this threshold to maintain a high standard of data integrity, ensuring that the report's findings illustrate the current state of impact investing in the Midwest.

Following the data collection, we employed data validation processes, including cross-referencing multiple sources to resolve discrepancies. Along the way, we conducted 17 interviews of leaders in the field who offered more data as well as qualitative insights. The final report offers an initial overview of impact investing in the Midwest, highlighting key trends, challenges, and opportunities within the region.

Thank you to all interviewees who contributed insights and data to this report:

- Melanie Audette of Mission Investors Exchange
- John Balbach of John D. and Catherine T. MacArthur Foundation
- Kristin Carlson Vogen of The Chicago Community Trust
- John Duong of Kind Capital LLC
- Sophie Forest of Bush Foundation
- Elizabeth McGeeveran of McKnight Foundation
- Scott Holdman of Legacy Logic
- Keith Johnson of Kids Forward Foundation
- Laura Kernaghan of The Chicago Community Trust
- Noelle Laing of Builders Vision
- John Machacek of Greater Fargo Moorhead Economic Development Corporation
- Scott Marquardt of Southwest Initiative Foundation
- Kari McCann Boutell of Iowa Council of Foundations
- Jennifer Miller Oertel of Council of Michigan Foundations
- Cynthia Muller of W. K. Kellogg Foundation
- Rosanne Potter of Cleveland Foundation
- Fran Seegull of U.S. Impact Investing Alliance

We invite you to consider this list as a first draft, and as capturing a point in time. We are certain it is not 100% accurate and look forward to others building on and updating this work as needed to support the expansion of the field. **Please click [here](#) to submit feedback on any new funds or data you believe is incomplete or incorrect.**

b. Fund Lists

IL

IN

IA

KS

MI

MN

MO

ND

NE

OH

SD

WI

\$ Illinois Impact Fund List

FIRM NAME	GEOGRAPHIC FOCUS
5th Century Partners	National
Allies for Community Business	
American Bancorp of Illinois, Inc.	
Angeles Investors	
Arc Chicago (Benefit Chicago)	Illinois
Ariel Investments	National
Avathon Capital	National
Bridge Investment Community Development Corporation	Illinois
Buoyant Ventures	National
Capitalize VC	
CAST US	National
Chama Capital	
Chicago Community Loan Fund, The	Illinois
Chicago Municipal Employees Credit Union	
Chicago Neighborhood Initiatives Micro Finance Group, Inc.	Illinois
Chicago Trend	
Chingona Ventures	
Cinnaire Lending Corporation	
Colorful Capital	National
Community Investment Corporation	Illinois

FIRM NAME	GEOGRAPHIC FOCUS
Community Plus Federal Credit Union	
Creation Investments Capital Management, LLC	International
Cultivian Sandbox	International
Earth Foundry	
Endeleo	
Energize Capital	International
Energy Capital Ventures	
EPIC Impact Investors	
Equator Capital Partners	International
Evergreen Climate Innovations (Clean Energy Trust)	
Exposition Ventures	
Fellowship Baptist Church Credit Union Inc	
Fifth Century Partners	
First Eagle Bank	Illinois
Food Systems for the Future	
GN Bank	
Greenprint Partners	National
Harrison Street	International
IBC Bancorp, Inc.	
IFF	

FIRM NAME	GEOGRAPHIC FOCUS
I.H. Mississippi Valley Credit Union	
Impact Engine Ventures & PE	International
Impact Shares	National
International Bank of Chicago	
Invenergy	
InvestHER Ventures	Midwest
Iroquois Valley Farmland REIT, PBC	
Israel Methcomm FCU	
Kabouter	Illinois
Local Initiatives Support Corporation (LISC)	National
M25	Midwest
Maroon Financial Credit Union	Illinois
Mazarine Ventures	International
Members "First" Credit Union	
Metro Edge Development Partners	National
mHub	
Mustard Seed Fund	
National Community Investment Fund	National
Neighborhood Lending Services, Inc.	
New Market Support Company	

FIRM NAME	GEOGRAPHIC FOCUS
Nuveen	
Oikos institute for Social Impact, Inc.	National
Open Prarie	Rural/ Midwest
Pan American Bank & Trust	
Park Manor Christian Church Credit Union	Illinois
Proofing Station	Midwest
Pulaski Savings Bank	Illinois
The Resurrection Project Lending, LLC	
RFLF 2, LLC	
Rural American Fund	Rural/ National
S2G Ventures	
SIU Credit Union	
Southern Illinois Coal Belt Champion Community, Inc.	
South Side Community Federal Credit Union	
St. Mark Credit Union	
Supply Change Capital	National
Sustainable Local Food Investment Group	
Tilia Holdings LLC	National
Torana Group	Midwest
Unified Homeowners of Illinois Federal Credit Union	Illinois



FIRM NAME	GEOGRAPHIC FOCUS
United Credit Union	Midwest
The University of Chicago Booth School of Business	National
VestedWorld	International
The Vistria Group	National
Women's Business Development Center	

\$ Indiana Impact Fund List

FIRM NAME	GEOGRAPHIC FOCUS
Afena Federal Credit Union	
Brightpoint Development Fund	Indiana
Build Fund, LLC	Indiana
Business Ownership Initiative	
Ceres Partners	National
Community Investment Fund of Indiana Inc.	Indiana
Edge Fund, LLC	
Flagship Enterprise Capital, Inc.	Indiana
Fort Financial Credit Union	
Indiana Energy Independence Fund	
Indianapolis Neighborhood Housing Partnership, Inc.	
Lafayette Neighborhood Housing Services, Inc.	
Mt. Zion Federal Credit Union	
NATCO Credit Union	
NorthPark Community Credit Union	
ProFinance Federal Credit Union	Indiana
REGIONAL federal credit union	
Sixty8 Capital	
Star Finance	
Union Baptist Church FCU	



\$ Iowa Impact Fund List

FIRM NAME	GEOGRAPHIC FOCUS
Ascentra Credit Union	
Community 1st Credit Union	
Community Foundation of Greater Des Moines	
Dupaco Community Credit Union	
Greater Cedar Rapids Community Foundation	
Habitat for Humanity of Iowa, Inc.	Iowa
Iowa Community Capital	Iowa
Iowa State Revolving Fund	
Iowa West Foundation	
Midwest Growth Partners	Iowa/Rura/ Midwest/ National
Neighborhood Finance Corporation	
Quad Cities Community Foundation	
Sustainable Farm Partners	
Veridian Credit Union	

\$ Kansas Impact Fund List

FIRM NAME	GEOGRAPHIC FOCUS
Citizens Bank of Weir	
Mazuma Credit Union	Kansas
Topeka Shawnee County First Opportunity Fund	
Tortoise	International



\$ Michigan Impact Fund List

FIRM NAME	GEOGRAPHIC FOCUS
Advia Credit Union	
Allegan Community Federal Credit Union	
Alpena Community Credit Union	
American 1 Credit Union	Michigan
Ann Arbor Area Community Foundation	Michigan
Astera Credit Union	
Awakon Federal Credit Union	
Battle Creek Community Foundation	
Belle Impact Fund	
CASE Credit Union	
Chi Ishobak, Inc.	Michigan
Chippewa County Credit Union	
Community Foundation of Greater Flint	
Community Foundation of St. Clair County	
The Community Foundation of Southeast Michigan	Michigan
Community Promise FCU	Michigan
CORE Community Partners	
Detroit Development Fund	Michigan
ELGA Credit Union	
Fair Food Network	Michigan

FIRM NAME	GEOGRAPHIC FOCUS
First Independence Bank	
Frankenmuth Credit Union	Michigan
Grand Rapids Opportunities for Women	
Great Lakes Womens Business Council	
ID Ventures	Michigan
Kalamazoo Neighborhood Housing Services, Inc.	Michigan
Lake Huron Credit Union	
Lake Superior Community Development Corp.	Michigan
Lake Trust Credit Union	
Max M. & Marjorie S. Fisher Foundation	
Members First Credit Union	Michigan
Metro Community Development, Inc.	Michigan
MI Good Food Fund	Michigan
Michigan Community Capital	Michigan
Michigan First Credit Union	Michigan
Michigan Good Foods Fund	Michigan
Michigan Women First	
Midland Community Foundation	
Muskegon Community Foundation	Michigan
Muskegon Co-op Federal Credit Union	

FIRM NAME	GEOGRAPHIC FOCUS
Northern Great Lakes Initiatives	Michigan
Northern Shores Community Development, Inc.	Michigan
OMNI Community Credit Union	Michigan
One Detroit Credit Union	Michigan
Opportunity Resource Fund	Michigan
Prosperus Detroit Micro Lending	Michigan
Public Service Credit Union	Michigan
Ruth Mott Foundation	
Security Credit Union	
Southwest Michigan Community Development Corporation	
Straits Area Federal Credit Union	
UBC Credit Union	
University of Michigan Credit Union	
Venture North Funding & Development	Michigan
Wayne Westland Federal Credit Union	
W. K. Kellogg Foundation	
Zeal CU	



\$ Minnesota Impact Fund List

FIRM NAME	GEOGRAPHIC FOCUS
Aeon	Minnesota
African Development Center of Minnesota	Minnesota
African Economic Development Solutions	
Alphas Future	International
ArtSpace	
Atland Ventures	National
Austin Community Growth Ventures	Minnesota
Better Future Forward	Minnesota/ Midwest
BLUU Northside Housing Cooperative Initiative	Minnesota
Bread & Butter Ventures	
Brown Venture Group	National
Build Wealth, MN, Inc.	Minnesota
Capita3	Midwest
Chisago Cty HRA-EDA	Minnesota
CommonBond Communities	
Community Neighborhood Housing Services	
Community Reinvestment Fund, Inc	
Dakota Cty Community Development Agency	Minnesota
Excelsior Energy Capital	National
First Children's Finance	National

FIRM NAME	GEOGRAPHIC FOCUS
Fortis Capital	Minnesota
Granite Partners	Minnesota
Greater Minnesota Housing Fund	Minnesota
Great North Ventures	
Groove Capital	Minnesota
Habitat for Humanity of Minnesota, Inc.	Minnesota
Habitat for Humanity - Twin Cities	Minnesota
Headwater Ventures	
Hennepin County Economic Development	Minnesota
Hill Capital Corporation	
Hmong American Farmers Association	Minnesota
Hmong American Partnership ECDC	Minnesota
Homes Within Reach (W Hennepin Affordable land trust, Suburban Hennepin Cnty)	Minnesota
Indian Land Capital Company LLC	Minnesota
Initiative Foundation	Minnesota
Isanti Cty Economic Development	
Justice Built Communities (Pillsbury United Communities)	
Lake Street Council	Minnesota
Latino Economic Development Center	
Launch MN	Minnesota

FIRM NAME	GEOGRAPHIC FOCUS
Leech Lake Financial Services, Inc.	
LFE Capital	
Matchstick Ventures	Midwest
Metropolitan Consortium of Community Developers	Minnesota
Metropolitan Economic Development Association	
Mid Minnesota Federal Credit Union	Minnesota
Midwest Minnesota Community Development Corporation	Minnesota/ Midwest
Milestone Growth Fund	
Minnesota Chippewa Tribe Finance Corporation	Minnesota
Minnesota Inclusive Growth Fund	Minnesota
MPowered Capital	
MSP Equity Fund (gener8tor)	
NeDA Centro de Finanzas LLC	
Neighborhood Development Alliance	
Neighborhood Development Center, Inc.	Minnesota
Neighborhood Housing Services of Duluth, Inc.	Minnesota
NeighborWorks Home Partners	Minnesota
New American Development Center (Hennepin Cty partner)	Minnesota
Next Stage (Hennepin Cty partner)	Minnesota
Northeast Entrepreneur Fund, Inc.	Rural

FIRM NAME	GEOGRAPHIC FOCUS
Northern Plains Fund	Midwest
Northland Foundation	Minnesota
Northside Economic Opportunity Network (NEON)	Minnesota
Northside Residents Redevelopment Council (NRRC)	Minnesota
NorthSky Capital	National
Northwest Minnesota Foundation	
NRRC Financial	Minnesota
Portico Healthnet	Minnesota
Project for Pride in Living	
Propel Nonprofits	
Ramsey Cty Community & Economic Development	
RBC Global Asset Management (MN)	Minnesota
Rochester Economic Development Fund	Minnesota
Rural Works	Midwest
Scott Cty Community Development Agency	Minnesota
Seward Redesign	Minnesota
Shared Capital Cooperative	
Sherburne Cty Economic Development Authority	
Sofia Fund	National
Stone Arch	Midwest



FIRM NAME	GEOGRAPHIC FOCUS
Sunrise Banks	
TCHFH Lending, Inc.	
Tundra Ventures	
Twin Cities Community Rebuilding Coalition	
Venn Foundation	
Twin Cities Community Rebuilding Coalition	
White Earth Investment Initiative	Minnesota
White Earth Reservation Federal Credit Union	
WomenVenture	

\$ Missouri Impact Fund List

FIRM NAME	GEOGRAPHIC FOCUS
Advantage Capital	
Alliance Credit Union	
Alltru Federal Credit Union	
AltCap	
Assemblies of God Credit Union	
Central Bank of Kansas City	
Century Bancshares, Inc.	
Century Bank of the Ozarks	
Credit Union ONE	
First Malden Bancshares, Inc.	
First Missouri Bank of SEMO	
Gateway Community Development Fund, Inc.	
Great Rivers Community Capital, Incorporated	
Greenville Bancshares Inc	
Guadalupe Centers Federal Credit Union	
Holy Rosary Credit Union	
Horizon Credit Union	
Impacto Fund, Inc.	
International Institute CDC	
Justine Petersen Housing & Reinvestment Corporation	

FIRM NAME	GEOGRAPHIC FOCUS
Legacy Bank & Trust Company	
Lewis & Clark Agrifood	
LimeBank	
Multipli Credit Union	
Ozarks Heritage Financial Group	Missouri
Peoples Community Bank	
River Region Credit Union	
St. Louis Community Credit Union	
United Consumers Credit Union	
Urban Strategies Inc	
WEPOWER	



Nebraska Impact Fund List

FIRM NAME	GEOGRAPHIC FOCUS
Chadron Federal Credit Union	
Community Development Resources	Nebraska
Ho-Chunk Community Capital Inc.	Nebraska
Midwest Housing Development Fund, Inc.	
Native360 Loan Fund, Inc.	Nebraska/ Iowa/North Dakota
Nebraska Enterprise Fund	Nebraska/ Iowa
Omaha 100, Incorporated	Nebraska
Rural Investment Corporation	

\$ North Dakota Impact Fund List

FIRM NAME	GEOGRAPHIC FOCUS
CommunityWorks North Dakota	
Dakota Business Lending	
Dakota Venture Group	
 Fargo-Moorhead Area Foundation	North Dakota/ Minnesota
Gener8tor	Midwest
North Dakota State	



Ohio Impact Fund List

FIRM NAME	GEOGRAPHIC FOCUS
Accelerating Angels	
The Affordable Housing Trust for Columbus and Franklin County	Ohio
American Dream Fund	
Appalachian Growth Capital, LLC	Ohio
Ariel Economic Development Fund, LLC	Ohio
Buckeye State Credit Union, INC.	Ohio
Canton School Employees Federal Credit Union	
Cincinnati Development Fund, Inc.	Ohio
Cincinnati Minority Business Accelerator	
City of Cleveland Site Readiness Fund	
Cleveland Development Advisors Community Reinvestment Fund, Inc.	Ohio
Cleveland Foundation	
Cleveland Neighborhood Progress	
Columbus Region Green Fund	Ohio
Commodore Perry Federal Credit Union	Ohio
Day Air Credit Union	Ohio
DAYTON REGION NEW MARKET FUND LLC	Ohio
Desco Federal Credit Union	
Drive Capital	Midwest
ECDI	

FIRM NAME	GEOGRAPHIC FOCUS
Economic and Community Development Institute, Inc. (ECDI)	Midwest
Evergreen Cooperatives	Ohio
Faith Community United Credit Union	Ohio
Finance Fund Capital Corporation	
Greater Cincinnati Microenterprise Initiative, Inc.	Ohio
Greater Cleveland Community Credit Union, Inc.	Ohio
Growth Opportunity Fund	Ohio
JumpStart Ventures	
Lightship Capital	
Loud Capital	Midwest
Mahoning Valley Economic Development Corporation	
The Mezzanine Fund	
Minerva Area Federal Credit Union	Ohio
The Model Group (TMG)	
Neighborhood Housing Services of Hamilton, Inc.	
Neighborhood Housing Services of Toledo, Inc.	
New Horizon Federal Credit Union	Ohio
North Coast Credit Union	Ohio
Nueva Esperanza Community Credit Union	Ohio
Ohio Capital Finance Corporation	Ohio

FIRM NAME	GEOGRAPHIC FOCUS
The Ohio Fund	
The Ohio Impact Fund	
Overlooked Ventures	
The Pride Fund	Ohio
Sinefine	
Softite Community Federal Credit Union	
St. Joseph's Federal Credit Union	
Stonehenge Capital	OH/NE/IL/ Nat'l/Int'l
Sustainable Community Associates	Ohio
Telhio Credit Union, Inc.	
Toledo Urban Federal Credit Union	
VacationLand Federal Credit Union	
The Wells Foundation	Ohio
West Central Development Corporation	
Western Reserve Community Fund, Inc	
YS Federal Credit Union	



\$ South Dakota Impact Fund List

FIRM NAME	GEOGRAPHIC FOCUS
Akiptan, Inc.	South Dakota
Badlands Capital	
Black Hills Community Loan Fund, Inc.	South Dakota
Dakota Resources	
Four Bands Community Fund, Inc.	South Dakota
Grow South Dakota	South Dakota
Homes Are Possible Inc.	South Dakota
Lakota Federal Credit Union	South Dakota
Lakota Fund, Inc., The	South Dakota
Mazaska Owecaso Otipi Financial, Inc	South Dakota
NDN Fund	
Neighborhood Lending Services, LLC	
Northeast South Dakota Economic Corporation (NESDEC)	South Dakota
Rural Electric Economic Development, Inc.	South Dakota/ Minnesota/ Rural
Sentinel Federal Credit Union	
Sisseton Wahpeton Federal Credit Union	
South Eastern Development Foundation	

Wisconsin Impact Fund List

FIRM NAME	GEOGRAPHIC FOCUS
Bay Bank	
Brewery Credit Union	Wisconsin
Columbia Savings and Loan Association	Wisconsin
Community Assets for People	
CoVantage Credit Union	Midwest
First American Capital Corporation, Inc.	Wisconsin
First Nations Community Financial	Wisconsin
Forward Community Investments, Inc.	Wisconsin
Gateway Capital	
Greater Green Bay Community Foundation	Wisconsin
Habitat for Humanity International, Inc. d/b/a Habitat for Humanity of Dane County	Wisconsin
Hmong Wisconsin Chamber of Commerce	Wisconsin
Impact Seven, Incorporated	
Legacy Redevelopment Corporation	Wisconsin
Milky Way Tech Hub	
Milwaukee Economic Development Corporation	Wisconsin
NiiJii Capital Partners, Inc.	Wisconsin
Northwest Side Community Development Corporation	Wisconsin
Pierce Cty Economic Development Corp	

FIRM NAME	GEOGRAPHIC FOCUS
Prime Financial Credit Union	Wisconsin
Royal Credit Union	
Saint Croix Cty Economic Development Corporation	
TitleTownTech	Wisconsin/ Midwest
Wisconsin Native Loan Fund	Wisconsin
Wisconsin Valley Ventures	Midwest
Wisconsin Women's Business Initiative Corporation	Wisconsin
Woodland Financial Partners Inc	Wisconsin



This page intentionally left blank



Publication Date: October 1st, 2024